

VAX-2-AC BLOWERS

AC Vaneaxial Blowers

C-5166



general design specification: Motor to MIL-M-7969

airflow: 50 cfm @ 2.1" H₂O

voltage: 115 VAC, 1 or 3 phase; 200 VAC, 3 phase

impeller: Dynamically balanced, precision cast aluminum

housing: Precision die-cast aluminum

bearings: Double shielded, life-lubricated for -55°C to +85°C operation. Special lubricants available for temperature extremes

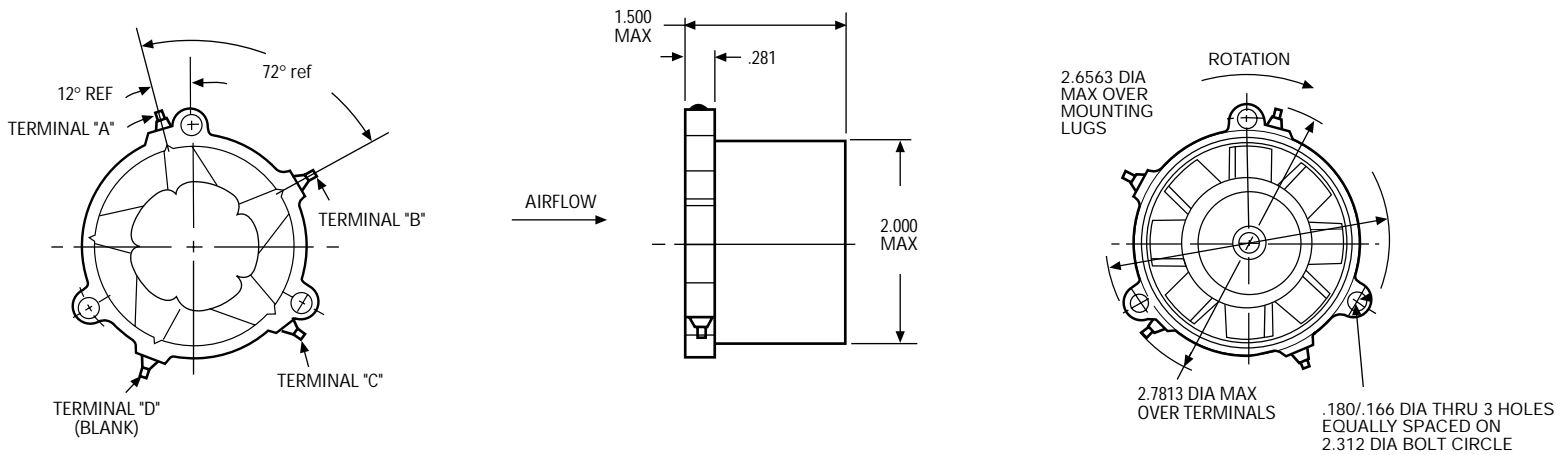
electrical connections: Solder terminals are standard. Leads are optional

mounting: Mounting can be made by three bolts through flange or by clamp around housing

marking: Per MIL-STD-130

life: 1,000 hours at 125°C, 19,500 rpm; 2,000 plus hours at 125°C, 11,000 rpm

Dimensions



NOTE: Optional leads are #32 AWG leads per MIL-W-16878/4 with exit at location of terminal "D" (8")

NOTE: Consult factory prior to preparing spec control prints. Dimensions are for reference only

Standard Part Numbers and Data

VOLT-AGE (VAC)	FRE-QUENCY (Hz)	P H A S E	SPEED min @ free air (rpm)	AIRFLOW min @ free air (cfm)	POWER INPUT max (watts)	CAPACITOR (µF) (wvdc)		WEIGHT max (oz.)	SCH-EMATIC WIRING	STANDARD PART NUMBER* (with terminals)	SCH-EMATIC WIRING	STANDARD PART NUMBER* (with leads)
115	400	1	10,000	35	20	.15	220	5.0	A	19A2533	A	19A2535
115	400	1	19,000	65	55	1.50	400	5.0	A	19A790	A	19A1199
115	400	3	19,500	65	45	—	—	5.0	A	19A790	A	19A1199
200	400	3	10,500	33	15	—	—	5.0	B	19A1150	D	19A1200
200	400	3	19,500	65	45	—	—	5.0	C	19A774	C	19A1198

Note: All 3-phase voltages are line to line. MIL-STD-704 is 200V line-to-line

*When You Order

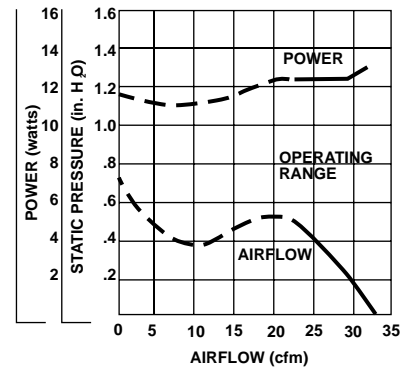
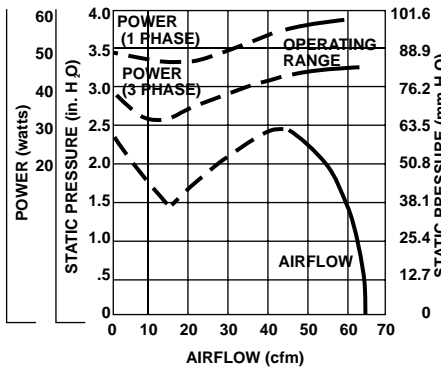
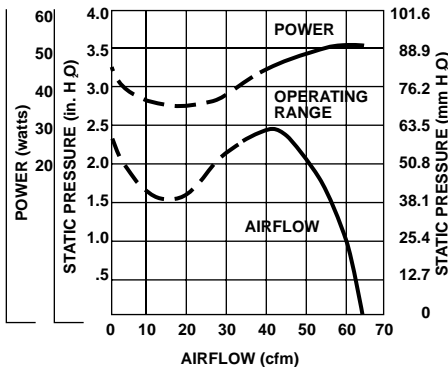
Units shown above are standard and may be ordered by part number. Motor windings, voltage, frequency, speed, current and airflow can usually be modified to fit your needs

Typical Performance

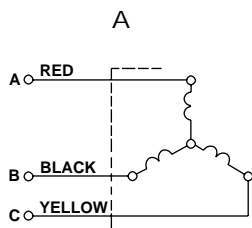
Part No.: 19A774, 19A1198
 Voltage: 200 VAC
 Operating Point: 50 cfm @ 2.1" H₂O

Part No.: 19A790, 19A1199
 Voltage: 115 VAC
 Operating Point: 47 cfm @ 2.1" H₂O

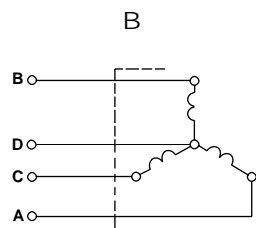
Part No.: 19A1150, 19A1200
 Voltage: 200 VAC
 Operating Point: 21 cfm @ .5" H₂O



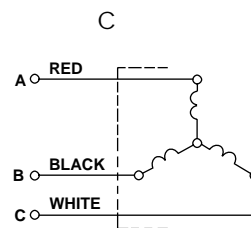
Schematic Wiring



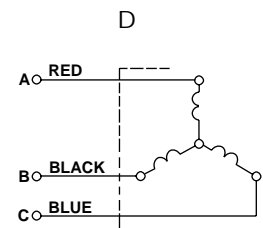
ABC PHASE SEQUENCE FOR CW ROTATION (VIEWING PROP. END). TO RUN SINGLE PHASE CONNECT LINE TO A & C, CAPACITOR TO B & C



ABC PHASE SEQUENCE FOR CW ROTATION (VIEWING PROP. END)



ABC PHASE SEQUENCE FOR CW ROTATION (VIEWING PROP. END)



ABC PHASE SEQUENCE FOR CW ROTATION (VIEWING PROP. END)