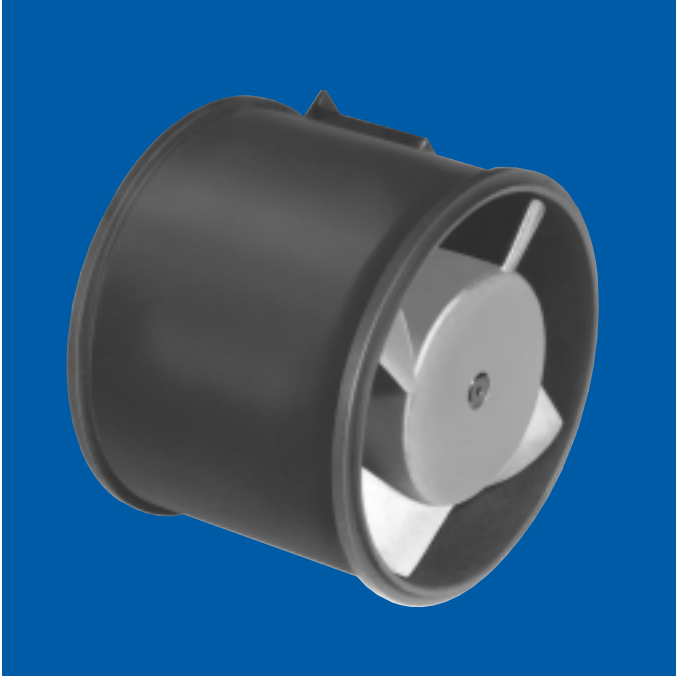


# VAX-3-AC BLOWERS

AC Vaneaxial Blowers

C-5246



general design specification: Motor to MIL-M-7969

airflow: 105 cfm @ 3.3" H<sub>2</sub>O (3-phase); 105 cfm @ 2.7" H<sub>2</sub>O (1-phase)

voltage: 115 or 200 VAC

impeller: Dynamically balanced, precision cast aluminum

housing: Precision die-cast aluminum

bearings: Double shielded, life lubricated for -55°C to +85°C operation. Special lubricants available for temperature extremes

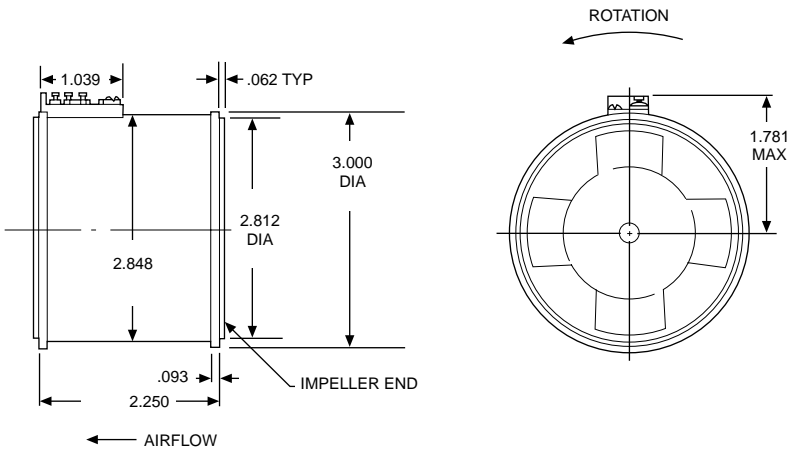
electrical connections: Solder terminals are standard. Leads are optional

mounting: Standard mounting is by clamping to servo flange on either end, or by clamping around diameter

marking: Per MIL-STD-130

life: 500 hours at 125°C ambient. Three-phase units 1,000 hours at 100°C ambient

## Dimensions



**NOTE:** Consult factory prior to preparing spec control prints. Dimensions are for reference only

## Standard Part Numbers and Data

VOLTAGE (VAC)	FREQUENCY (Hz)	PHASE	SPEED min @ free air (rpm)	AIRFLOW min @ free air (cfm)	POWER INPUT max (watts)	CAPACITOR (μF) (wvdc)	WEIGHT max (oz.)	SCHEMATIC WIRING	STANDARD PART NUMBER*
115	400	1	19,500	162	160	.8 400	15	A	19A764
115	400	3	11,000	90	33	— —	15	B	19A2541
115	400	3	20,500	167	160	— —	15	B	19A798
200	400	3	11,000	92	24	— —	15	B	19A2542
200	400	3	20,000	167	150	— —	15	B	19A751

Note: All 3-phase voltages are line to line. MIL-STD-704 is 200V line to line

## High Altitude Blowers

VOLTAGE (VAC)	FREQUENCY (cps)	PHASE	SPEED sea level (rpm)	AIRFLOW min @ free air sea level (cfm)	AIRFLOW @ free air at altitude	WEIGHT max @ (oz.)	SCHEMATIC WIRING	STANDARD PART NUMBER*
208	400	3	17,000	140	162	15	B	19A2543
200	400	3	12,500	100	155	15	B	19A2544

Note: All 3-phase voltages are line to line. MIL-STD-704 is 200V line to line

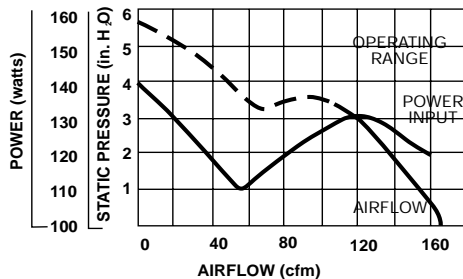
### \*When You Order

Units shown above are standard and may be ordered by part number. Motor windings, voltage, frequency, speed, current and airflow can usually be modified to fit your needs

### Typical Performance

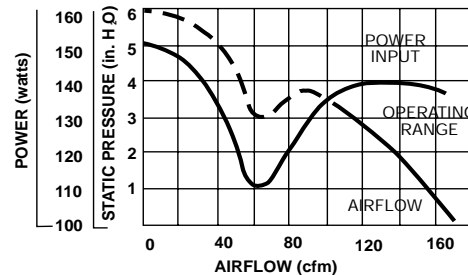
Part No.: 19A751

Operating Point: 105 cfm @ 3.3" H<sub>2</sub>O



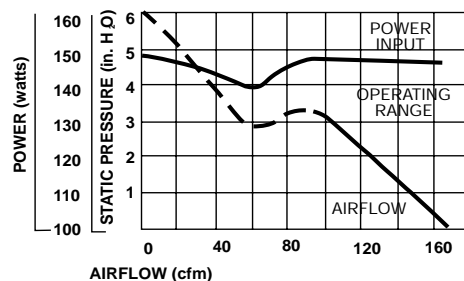
Part No.: 19A798

Operating Point: 105 cfm @ 3.3" H<sub>2</sub>O

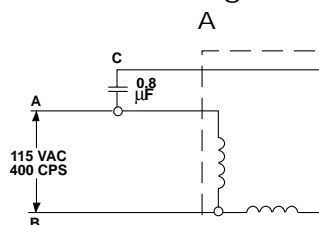


Part No.: 19A764

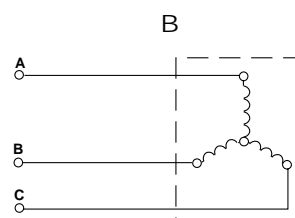
Operating Point: 105 cfm @ 2.7" H<sub>2</sub>O



### Schematic Wiring



CCW ROTATION (VIEWING IMPELLER END)



ABC PHASE SEQUENCE FOR CCW ROTATION (VIEWING IMPELLER END)