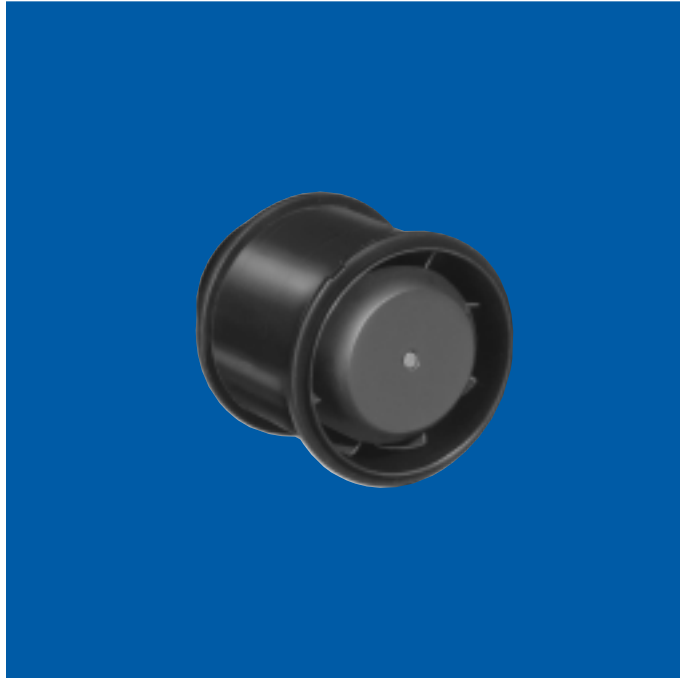


VAX-1.5-DC BLOWERS

DC Vaneaxial Blowers

C-5120



general design specification

airflow: 19 cfm max @ free air (50 VDC). 16 cfm max @ free air (27 VDC)

voltage: 27 or 50 VDC

impeller: Dynamically balanced, precision cast aluminum

housing: Precision die-cast aluminum

bearings: Double shielded, life-lubricated for -55°C to $+85^{\circ}\text{C}$ operation. Special lubricants available for temperature extremes

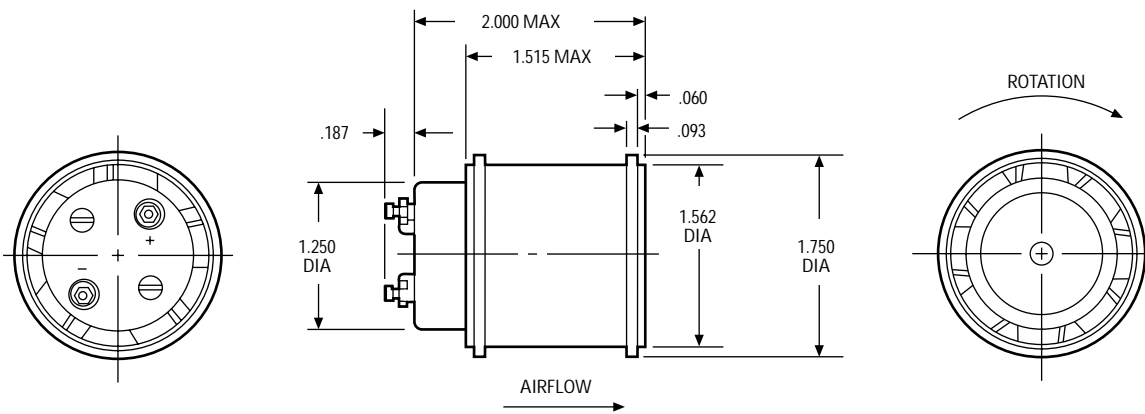
electrical connections: Solder terminals are standard. Leads are optional

mounting: Mounting is made by clamping around diameter or by clamping to servo flange at either end

marking: Per MIL-STD-130

life: 500 hours @ 50 VDC; 300 hours @ 27 VDC

Dimensions



ROTATION FOR SPECIFIED AIRFLOW
POSITIVE VOLTAGE TO (+), NEGATIVE VOLTAGE TO (-)

NOTE: Consult factory prior to preparing spec control prints. Dimensions are for reference only

Standard Part Numbers and Data

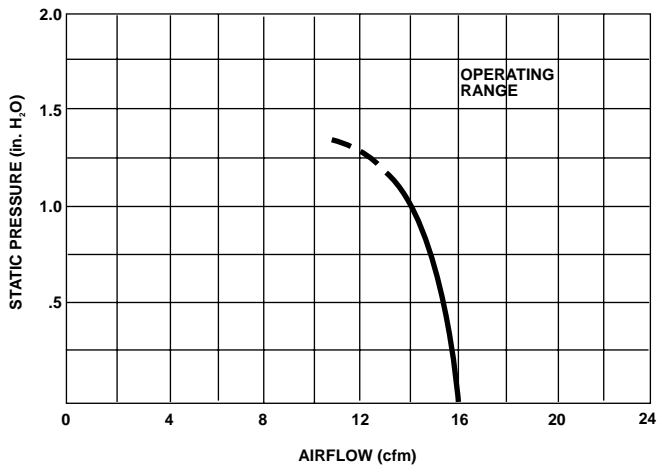
VOLTAGE (VDC)	SPEED min @ free air (rpm)	AIRFLOW typ @ free air (cfm)	POWER INPUT max (watts)	CURRENT max @ free air (amps)	WEIGHT max (oz.)	STANDARD PART NUMBER*
50	20,000	19.0	17.5	.35	5.0	19A1345-2
27	18,500	16.0	17.5	.65	5.0	19A1345-1

*When You Order

Units shown above are standard and may be ordered by part number. Motor windings, voltage, speed, current and airflow can usually be modified to fit your needs

Typical Performance

Part No.: 19A1345-1: 14 cfm at 1.0" H₂O



Part No.: 19A1345-2: 15 cfm at 1.3" H₂O

